



Banda Group
International

Statement of Qualifications



We hold our clients and community in the highest regard, we earn their trust by conducting business with honesty, integrity, and consistency. BGI values its employees as professionals, and friends, and promotes their development and their contributions to our organization and clients.

Vision

To be a world class technical and management support services company whose work is valued and sought after by its clients.

Mission

With passion, pride, and professionalism, actively partner with clients to deliver superior technical and management support exceeding expectations.

Values

- Conduct business in an ethical and honest manner
- Possess professional integrity and exemplary dedication to client satisfaction
- Promote the belief all injuries and incidents are preventable

Banda Group International

Banda Group International, LLC (BGI) is a world class technical and project management support company serving government and private sector clients around the globe. BGI is headquartered in Mesa, AZ, with offices in Albuquerque, NM, White Rock, NM, and Oak Ridge, TN.

Founded in 2003 upon the principles of environmental, health, and safety (EH&S) support, BGI has since developed into an international company engaging in projects across the United States (U.S.) and in diverse international locations such as Algeria, Australia, Chile, China, Ireland, Israel, Laos, Mexico, South Korea, Romania, and Venezuela.

During the years, BGI has expanded its services to include environmental remediation and characterization, site security and security escort services, as well as construction oversight and management for a wide range of clients. **Keeping workers safe, and ensuring overall project safety, is the core of BGI's business.** BGI staff members work closely with clients to establish strong working relationships and deliver project success while providing solutions to complex problems and ensuring client satisfaction.

BGI's proven business systems and procedures include project management and financial systems able to handle projects of any size or complexity. BGI is a small business with large company infrastructure and support networks. By working with Fortune 100 companies, and large government agencies, BGI has successfully demonstrated the capability to manage costs on large projects with multiple, concurrent assignments. BGI completes complex tasks on time and within budget.

BGI's staff of experts provide quality support services to all clients and staff members have an average of 20 years of experience in their respective fields. BGI has received numerous awards for EH&S support from minority supplier entities, major private sector corporations, and government agencies.

Visit BGI's corporate website



Learn more about BGI's small business certifications



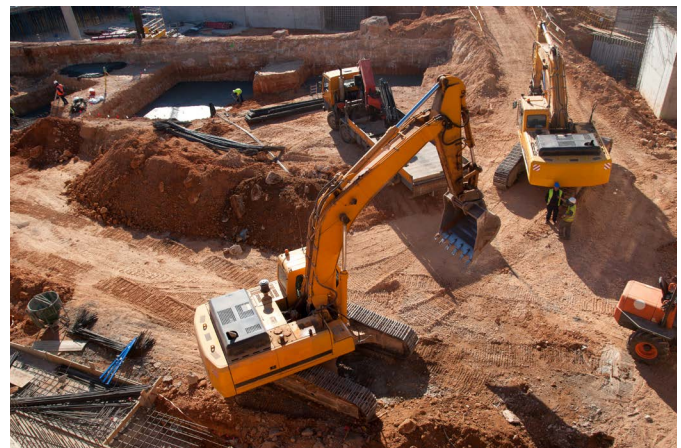
Certified Small Disadvantaged Business with the United States Small Business Administration



Visit BGI's LinkedIn page



Middle Delta Prime Road Project, Los Alamos National Laboratory
Sample collection activities.



BGI provides construction safety, facility hazard analysis, state and federal OSHA compliance, and overall project health and safety oversight.

Environmental, Health and Safety

BGI provides a full range of environmental, health, and safety (EH&S) services to both federal and commercial clients. **BGI believes that all injuries and incidents are preventable, and this belief shapes the quality of work we provide to our clients.** We strive to achieve a safety-first culture.

Our safety management and industrial hygiene experts are industry leading professionals and BGI provides a complete scope of EH&S services including radiation and hazardous materials safety, industrial safety, construction safety, facility hazard analysis, EH&S training and program development, state and federal Occupational Safety and Health Administration (OSHA) compliance, and overall project health and safety oversight.

BGI provides the following EH&S services:

- **Staffing.** BGI provides safety staff and oversight personnel for on-going facility operations and construction projects ranging from small office modifications to construction of multi-billion-dollar installations. We assist our customers in determining the level of expertise needed for a project and we provide qualified experts from a large pool of candidates. BGI prides itself on the ability to find and deploy qualified staff for any project.
- **Auditing.** BGI's staff provides independent EH&S audits to analyze organizational performance. Although many audits are driven by competitive pressures, insurance costs, and legislative requirements, most clients use our auditing program to benchmark their operating performance for continuous improvement in their EH&S management program. BGI auditors have the innate ability to see beyond the obvious and look for trends, which may cause potential future incidents, saving our client time and money.

- **Program Development & Implementation.** BGI creates custom safety programs and safety management systems for many of our clients. These programs are specifically tailored to a company's operations. Additionally, we develop voluntary protection programs as well as incident and injury prevention plans as required by OSHA. Any program BGI develops will not only help assure compliance with regulatory requirements and recognized international standards but, it will promote a culture where safety is evaluated and prioritized in every aspect of the organization.
- **Training.** Whether in person or online, BGI provides training to help assure workers have proper knowledge of safety requirements and can recognize and address hazards in their workplace.

Other EH&S services we offer:

- Industrial Hygiene Assessment and Control
- Process Engineering, Design, and Risk Analysis
- Safety Culture Development
- Incident Investigation and Root Cause / Trend Analysis
- Chemical Safety Analysis
- Fire Hazards / Risk Analysis

Relevant Experience

Confidential Client, Construction and Tool Installation EH&S Program Management for FAB Construction Projects, AZ, CA, NM, OR, MA, Israel, Ireland, and China, 2012 – Ongoing

BGI has been a key technical support service subcontractor providing EH&S program management for one of the world's largest multinational semiconductor and technology corporations for more than a decade. BGI acts on the client's behalf to oversee the performance of construction activities including construction



EH&S professionals and staff on location.



Oversight personnel at on-going facility operations and construction project.

management and contractor performance. BGI staff completes detailed design review and safety sign-off procedures prior to releasing the process manufacturing equipment for use. BGI also performs training, assists with incident investigations, performs daily field audits, and provides technical support to contractors. The BGI team supports construction projects ranging in value from \$250 million to \$2 billion.

Currently, BGI is providing EH&S engineering service support for the decontamination, decommissioning, demolition, and retrofitting of manufacturing equipment (“production tools”) in an operational semiconductor factory containing over \$10 billion of operational assets. These assets are located in mixed cleanroom and utility level environments throughout four interconnected facilities stretching over one mile from end-to-end.

BGI assists clients engineers in developing detailed checklists to conform to factory specifications, pre-work collaboration meetings, and subsequent post-decontamination and decommissioning safety audits, which validate safe state of manufacturing equipment and facilities before and during demolition activity.

This work involves high-hazard and high-consequence activities due to the proximity of other active production tools, which can contain hazardous chemicals, explosive gases, high-voltage wiring, non-ionizing radiation hazards, lasers, hazardous liquid, and solid waste streams. BGI is responsible for program implementation, continuous improvement analysis, maturation, and integration into the world-wide “virtual factory” of universal best practices.

BGI staff established, and now delivers, training programs, which facilitate a “coaching style” safety environment. The EH&S team provides mentorship and conflict resolution for all level of contractor workforce — senior engineers to trade workers. BGI services are vital to the life of the program in order to assure high-quality service without interrupting daily production of more than \$1 million of product.

General Electric Company, Power & Water, Wind Turbine Construction and Commissioning, Various Locations, 2007 – Ongoing

BGI is a General Electric (GE) preferred contractor and one of two subcontracted EH&S companies GE uses to support their wind farm construction sites. BGI oversees all aspects of the client’s EH&S program management in the construction of wind towers at locations across the U.S. and abroad since 2007. BGI’s team develops, implements, and manages site-specific EH&S programs including pre-construction activities, equipment delivery, installation, and commissioning of wind turbines. Construction subcontractors and commissioning engineers are directly monitored for adherence to all federal, state, and local applicable regulations. BGI provides compliance support services by ensuring that the entire worksite

observes lock-out / tag-out (LO / TO), appropriate chemical and waste handling and storage, spill response and remediation, endangered species monitoring, soil resource protection for marshes and fluvial ways, and site reclamation activities. BGI continues to work with GE and has completed more than forty wind farm projects in 20 states, and completed international projects in Canada, Mexico, and Romania.

U.S. Department of Labor, Industrial Hygiene Support, 2016 – 2021

BGI provided industrial hygienist support to the U.S. Department of Labor’s Office of Workers Compensation Program’s Division of Energy Employees Occupational Illness Compensation. In support of the Claims Examiner, BGI identified specific chemical or biological toxins an employee may have been exposed to during their career, evaluated historical occupational safety and health data, and prepared written opinions concerning the extent, nature, and duration of employee exposure to occupational toxic substances.

NASA, Goddard Space Flight Center, Occupational Safety Program Services, 2009 – 2019

BGI provided comprehensive occupational health and safety program services for the entire Goddard Space Flight center in Greenbelt, MD. The center is comprised of more than 3,000 government and 5,000 contract personnel with more than eight major facilities covering over 3.4 million square feet of office, industrial, and laboratory space, as well as four satellite support facilities (Goddard Institute for Space Studies, Independent Verification & Validation Facility, Merritt Island, and White Sands Test Facility). BGI’s scope of work included: information management, regulatory review and assessment, facility inspections, facility design reviews, cryogenic safety analysis, mishap investigations, safety training courses, safety programmatic analysis and integration, and test safety operations.



BGI Wind Team performing commissioning and maintenance services on GE wind turbines.

Environmental Services

BGI delivers solutions that support our clients’ needs and improve the communities in which we live and serve. Skilled technical and professional staff provide a broad range of environmental services to government and commercial clients. Staff experts provide environmental services on-schedule, within budget, and at the highest level of quality. The BGI team of experts includes highly-skilled specialists available to support environmental permitting and compliance; industrial hygiene assessment and control; site assessment and characterization; feasibility studies; soil, sediment, surface and groundwater sampling and characterization; decommissioning and demolition; field technical support; project planning and reporting; data evaluation; regulatory permitting and compliance; and waste management.

BGI provides the following environmental services:

- **Contaminated Soil Characterization, Human Health, and Ecological Risk Assessments.** BGI has demonstrated its ability to successfully characterize contaminated sites and perform human health and ecological risk assessments to meet regulatory requirements in order to release land restrictions for solid waste management units (SWMUs) and areas of concern. Although BGI started as a small company providing health and safety services, BGI has established itself as one of the key legacy waste cleanup contractors at Los Alamos National Laboratory (LANL) and Sandia National Laboratories (SNL). BGI provides continuous monitoring and various cleanup activities at SNL and also conducts groundwater monitoring activities to support the hexavalent chromium and Royal Demolition Explosive groundwater contamination programs at LANL as well as various characterization, waste packaging, and remediation projects.
- **Demolition and Decommissioning.** BGI teams execute characterization and sampling services to support the demolition of radioactive facilities and underground structures. This includes systematic sampling to identify and remove radiological waste as well as comprehensive subsurface investigation to identify the presence of geophysical anomalies suggestive of legacy waste in order to define the nature and extent of contamination. BGI teams can excavate and package various levels of radioactive waste soil and debris while also collecting and evaluating confirmation sample results used in the development of human health and ecological risk assessments.
- **Long-term Stewardship.** BGI provides cradle to grave environmental solutions, including long-term stewardship services. These services protect the environment and human health at sites that have residual contamination present even after “cleanup” is complete. Long-term stewardship includes all engineered and institutional controls designed to contain or prevent exposure to residual radioactive or chemical contamination, such as surveillance activities, record-keeping activities, inspections, site monitoring, maintenance of barriers

or contaminant structures, access control, and the posting of appropriate signs. This work includes maintaining engineered evapotranspirative covers at disposal sites operated under Resource Conservation and Recovery Act permits by installing gravel, providing supplemental watering, performing erosion control, and repairing the covers in accordance with Storm Water Pollution Prevention Plans and the Post-Closure Care Permits.

- **Nuclear Safety.** BGI staff supply services to determine whether or not controls are adequate to meet nuclear explosive surety standards. BGI’s senior technical advisors and nuclear explosive safety consultants can conduct nuclear explosive safety evaluations associated with design attributes of new and refurbished nuclear weapons to prevent nuclear detonation or deflagration, given an adverse environment, unauthorized act, or deliberate unauthorized use.

BGI provides our clients with experienced and qualified project managers, engineers, geologists, scientists, risk assessors, and other professionals to evaluate complex environmental problems, provide workable solutions, and implement work plans to successfully meet final end-state conditions.



**Middle Delta Prime Road Project,
Los Alamos National Laboratory**
Soil sample collection activities on pile.

Relevant Experience

Los Alamos National Laboratory (LANL), Newport Nuclear News BWXT (N3B), Environmental Services, Los Alamos, NM, 2020 – Ongoing

BGI is providing environmental characterization and remediation on a task order basis under a \$20 million Master Services Agreement (MSA). This is a follow-on contract from a \$4.5 million MSA. Services include soil, sediment, sludge, and water sampling, waste management, well drilling, storm water pollution control, contaminated site characterization and remediation, decommissioning and demolition, site restoration, geodetic, geophysical, and radiological surveys, high explosives screening, and support for regulatory and stakeholder interactions.

U.S. Department of Energy (DOE), LANL, Middle Delta Prime Road (MDPR) Project, Los Alamos, NM, 2020 – Ongoing

BGI is in the process of conducting a systematic sampling program at the MDPR Project to identify and remove hazardous and radiological waste across the site. BGI has performed a comprehensive subsurface investigation to identify the presence of geophysical anomalies suggestive of legacy waste and to define the nature and extent of contamination. In 2021, BGI excavated and packaged approximately 4,179 yd³ low-level radioactive waste (LLW) and 105 yd³ mixed low-level radioactive waste (MLLW) soil and debris from the site. BGI is responsible for collecting and evaluating confirmation sample results and the development of human health and ecological risk assessments. BGI is currently remediating the contaminated areas as they are discovered, removing contaminated soil and material, placing soil and materials in roll-off bins, and sampling to determine proper waste disposal. BGI is also conducting confirmation sampling of surrounding soil to determine if additional excavation and removal is required. BGI is currently analyzing sample data for additional characterization and investigations planned into 2023.

DOE, SNL Groundwater Treatability Study, Albuquerque, NM, 2017 – 2022

BGI conducted a phased treatability study of *in situ* bioremediation as a potential technology to treat groundwater contamination at Sandia National Laboratories (SNL). The project included construction, mobilization, and operation of an above-ground injection system (AIS) and gravity-injection of a bioremediation solution into multiple wells. BGI injected more than 530,000 gallons of bioremediation solution and monitored the performance of *in situ* treatment for trichloroethene and nitrate groundwater contamination.

DOE, SNL, Mixed Waste Landfill and Evapotranspirative Covers, Albuquerque, NM, 2016 – Ongoing

BGI maintains engineered evapotranspirative (ET) covers at three disposal sites, the Mixed Waste Landfill, Chemical Waste Landfill (CWL), and the Corrective Action Management Unit. These sites are operated under *Resource Conservation and Recovery Act* (RCRA)

permits issued by the New Mexico Environment Department (NMED). BGI maintains the integrity of the covers by removing weeds, placing new weed barriers, installing gravel, and performing erosion control and repair in accordance with the site's Storm Water Pollution Prevention Plan (SWPPP).

DOE, Environmental Support at the Delta Prime Site Aggregate Delayed Sites Project, 2019 – Ongoing

BGI delivers sampling and environmental support services for the characterization, remediation, decontamination, and demolition of building 21-257, a radiological liquid waste treatment facility at LANL. Work also included removal of the supporting above-ground contaminated storage tanks and radioactive waste lines where hazardous and radioactive contaminants are present. Along with sampling and characterization, the BGI team was responsible for locating, excavating, and removing industrial waste lines (IWLs), which carried contaminated hazardous waste into building 21-257. However, during characterization, radiological waste was uncovered in the IWLs and within building 21-257. Proper permitting is not yet in place to remove the level of radiological waste uncovered. BGI continued work by characterizing the vertical and horizontal extent of contamination pending proper permitting.

Along with site support and environmental professionals, BGI furnished environmental protection and compliance training for site workers, conducted environmentally related pre-job briefings, evaluated site for environmental protection and compliance issues, interfaced with prime contractors and the project's subcontractor representative, initiated mitigation, and updated project documents. The team prepared project reporting deliverables.

In addition to field sampling duties, BGI provided waste management support supervising the handling, sizing, loading, and packaging of all wastes ensuring compliance and proper removal. BGI has been tasked with continuing this work starting in 2023.



Mixed Waste Landfill and Evapotranspirative Covers Project, Sandia National Laboratories.

Construction Management and Oversight

BGI provides construction management and support services to federal and commercial clients. Services encompass all aspects of construction management from planning and start-up to completion and commissioning support. BGI construction managers oversee every project aspect and they support design, design-build (DB), design-bid-build (DBB), and build projects alike. The BGI team of experts provide integrated project management, controls, quality assurance, design review and compliance, as well as field construction oversight to complete construction projects safely, in compliance, on time, and within budget. BGI provides a variety of construction management and oversight services including pre-construction and construction integration services to assure owner and contractor alignment on projects. BGI personnel have experience in the planning for, and management of, construction projects of varying sizes and complexities.

BGI provides the following environmental services:

- **Construction Management and Oversight.** BGI’s construction management and oversight capabilities are comprised of program management; integrated project management and controls; quality assurance and quality control (QA / QC); engineering design review and compliance; pre-construction consulting; field construction oversight; start-up and commissioning support; safety program management; and contractor oversight.

BGI provides experts to fill key positions for both government and commercial construction projects including experienced project managers, program directors, safety specialists, or quality control specialists.

The BGI team can guide projects through complex pre-job submittals including review and completion of integrated work documents (IWDs), work instruction procedures, or job hazard analysis. Once jobs are underway, teams help manage day-to-day activities such as hosting morning tailgate safety meetings and completing necessary progress reports.

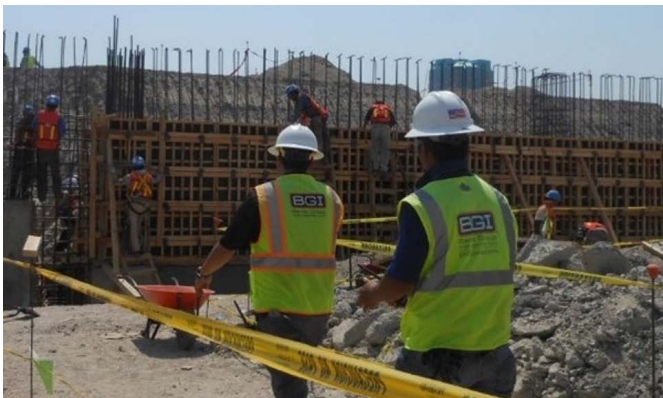
- **General Construction Support Services.** BGI provides construction services such as carpentry, heavy equipment operators, janitorial services, plumbers, or general laborers on a broad range of projects. Projects range in varying size from large semiconductor construction sites to tenant improvement projects. These teams self-perform various tasks or work in tandem with general contractors and site managers. Services range from support for basic construction needs to logistics support or oversight by subject matter experts (SMEs).

Core Competencies

- Construction Project Management and Execution
- Construction Safety Management
- Assessment and Oversight
- Environmental Management, Compliance and Consulting
- Government Program Management and Support
- Industrial Hygiene Management and Radiation Safety
- Occupational Safety and Health Program Development, Assessment, and Oversight



BGI provides safety services, facilities management, light carpentry, site maintenance, access control and management on high-tech projects.



BGI construction provides quality control and assurance programs as well as field construction oversight.



BGI provides industrial hygiene management and radiation safety support services.

Relevant Experience

U.S. Army Corps of Engineers (USACE), DOE, LANL, Engineering and Construction Management Services, 2014 – Ongoing

BGI provides engineering and construction management services for the USACE to support the DOE's mission at LANL in Los Alamos, NM. Primarily, BGI provides USACE and the National Nuclear Security Administration (NNSA) with glove box inspection services commensurate with NNSA's standard procedures. BGI employees conduct constructability reviews, assure compliance with NQA-1 nuclear quality requirements, review drawings and specifications, review welding procedure specifications and welder qualification test records, conduct field oversight during equipment installation, and verify successful completion of leak testing. BGI's on-site staff assist with field oversight of construction activities, assure work control processes and procedures are effectively implemented and optimized, and that work is safely and effectively coordinated with the facility operations team. BGI work includes producing plans, reports, briefings, meeting minutes, and other reporting requirements. BGI has developed a collaborative relationship with the LANL Project Management Office (PMO) and the Triad National Security, LLC Engineering Project Teams to resolve project issues and facilitate continuous improvement.

Confidential Client, Semiconductor Wafer Production Campus, Facility and Logistical Support, Phoenix, AZ, 2022 – Ongoing

BGI supports the construction of a \$12B semiconductor manufacturing campus near Phoenix, AZ. BGI provides safety services, facilities management, light carpentry, general site maintenance, access control and management, security and site control, training, and logistics support. On-site staff is comprised of bilingual trainers and facilitators, security officers, administrative assistants, field laborers, carpenters, site coordinators, and safety professionals.



BGI teams conduct daily and weekly toolbox meetings to emphasize safety and project objectives.



BGI provides construction project management as well as construction safety management.

LANL, Triad National Security, LLC, General Construction Multiple Award Task Order Contract, 2021 – Ongoing

BGI, partnered with GCON to form a joint venture, BJI-GCON JV, LLC received award of a Indefinite-Delivery Indefinite-Quantity (IDIQ) Multiple Award Task Order Contract (MATOC) for General Construction at LANL. The team is deployed to demolish, remove, and remediate a decommissioned diesel tank. Work on this project included the removal of associated piping and infrastructure as well as soil sampling and proper waste disposal.

This 12,000-gallon tank previously serviced a large building, which included laboratory and office space. Demolition crews were tasked with removing all interior and exterior piping and electrical controls; lifting and hauling away the tank; conducting soil sampling and soil removal under tank; managing and characterizing waste streams for proper disposal; and then repairing any sidewalk or infrastructure damage before finalizing the project.

BGI-GCON installed a safety-class diesel generator pad servicing multiple buildings, which included a sensitive nuclear facility at LANL. This work is concurrent with the diesel tank decommissioning project and involve utility locates, excavation, relocation of water lines, engineered fill, concrete pouring, placement of rebar and pad penetrations, duct bank to connection points, installation of bollards, paving, and other general construction requirements.

Given the sensitivity of the facility that this generator pad would service, QA / QC is a top priority, so BGI personnel work closely with LANL personnel to assure all engineering designs are correct and appropriate materials are sourced and deployed.



Security Services

BGI offers comprehensive site security services and security escort services to federal and commercial clients nationwide. Security personnel are highly trained professionals, many are U.S. military or law enforcement veterans, and all BGI security personnel are certified level one anti-terrorism officers.

Security specialist can provide a complete scope of security programs including general security, physical security, personnel security, and protection of intellectual property. We also provide DOE “Q-cleared” security escorts who facilitate uncleared individuals to enter secure areas on DOE sites.

BGI provides the following safety services:

- **Commercial.** BGI manages site security for a broad range of clients in the commercial sector. The security teams can be deployed in a number of situations such as residential areas, construction sites, or manufacturing facilities. While deployed, teams work to implement a broad array of holistic security programs. BGI professionals develop and establish site-specific security plans, exercise site access controls, badge visitor and workers, perform patrols, conduct security briefings, execute emergency response plans, and monitor for unusual or illegal activity.
- **Federal.** BGI provides “Q-cleared” security escorts to the DOE. DOE “Q-cleared” security escorts are industry leaders in all aspects of protected area (PA) and exclusion area (EA) access. BGI’s security escort personnel possess institutional knowledge to easily interface between clients and the DOE’s security protective services to facilitate smooth and efficient PA or EA site access. Professionals are trained and experienced in guiding clients through the multiple security layers in place at DOE sites across the U.S., including Oak Ridge National Laboratories located in Tennessee, and Los Alamos National Laboratories located in Los Alamos, NM. BGI provides the resources, training, and personnel necessary for clients to successfully communicate with DOE’s contract site training representatives (STRs) in order to establish escort agreements and successfully execute badging and “Q-clearance” required tasks. BGI’s escorts collaborate with clients and DOE site personnel to facilitate oversight of work including site navigation, control of unauthorized access, and assurance that security interests are preserved inside restricted areas.
- **Training.** BGI facilitates a wide range of site-specific required trainings to both clients and security personnel. Trainings involve cardiopulmonary resuscitation (CPR), First Aid, and automated external defibrillator (AED), insider threat, active shooter, counter-intelligence awareness, vulnerability and threat assessments, critical infrastructure protection, as well as active threat mitigation and response.

BGI has the proven capability to provide experienced, industry leading, security specialist ready to respond to all client needs and have established proactive operational recruiting methods to assure team members possess the required knowledge and skills to perform a variety of security tasks.

Relevant Experience

Confidential Client, Semiconductor Wafer Production Campus, Site Security Support, 2021 – 2023

BGI provided comprehensive security services for the construction of a large-scale semiconductor manufacturing and fabrication campus near Phoenix, AZ. BGI developed an extensive site-specific security plan outlining general site logistics, site access, general security, physical security, personnel security, traffic control, and protection of intellectual property. The site-specific security plan included access to K9 survey teams and the deployment of drone countermeasures to mitigate unwanted ariel surveillance of the site.

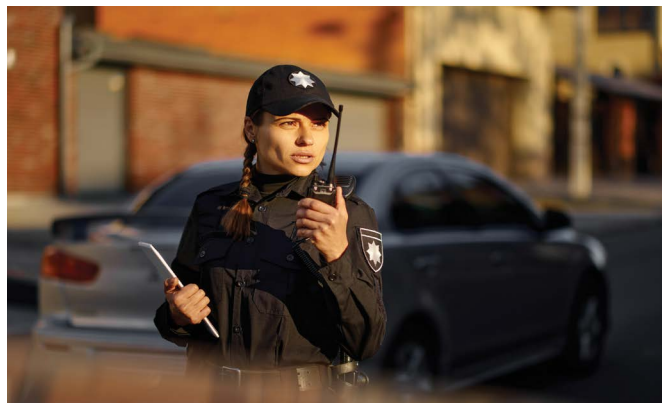
Trained members of the BGI security team used specialized computer surveillance to detect and monitor any drone activity, then report all incidents to our client. BGI takes a holistic approach to site safety and deploys a broad range of security measures. To accommodate the large flow of on-site personnel, BGI fielded a 24 / 7 security team, which controlled the entry and exit of all workers and vehicle at multiple access points on the 850-acre site. Bi-lingual security personnel conducted employee orientations in English and Spanish and badged site workers for daily or temporary access. BGI monitored security screenings at each entry point to assure only authorized personnel were admitted and that no prohibited devices entered the site. BGI also controlled, screened, and logged all vehicle traffic entering the site including contractor trucks, service vehicles, and materials or equipment deliveries. The security support team provided high-quality site-security services — the team was proud to deliver services, which provided for the the safety of all personnel and intellectual property at the campus.

Consolidated Nuclear Security, LLC, Y-12 National Security Complex Security Escort Services, 2016 – Ongoing

BGI is a security escort contractor for DOE’s Y-12 National Security Complex located in Oak Ridge, TN. Our “Q-cleared” escorts facilitate site access for various subcontractors working on a variety of projects including construction, industry, and EH&S tasks at the Y-12 National Security Complex. BGI leverages its institutional knowledge of DOE’s site security and protective service’s procedures to assure that our clients are prepared to navigate the many layers of complex site security. Escorts interface with clients and the DOE staff to coordinate escort agreements and effectively communicate requirements for site access and work-site tasks. BGI’s industry leading “Q-cleared” escort professionals assure that control of unauthorized access, client protection, and site security are all safeguarded inside protected areas.

DOE, LANL, Security Escort Services, 2022 – Ongoing

BGI provides security escort services at LANL on two projects within Technical Area 55 (TA-55). BGI escorts are responsible for protecting DOE facilities and property while also meeting the needs of corporate and client partners. Escort teams directly collaborate with clients to assess needs and assure they are approved and properly trained to access restricted area sites. “Q-cleared” escorts accompany un-cleared personnel, visitors, and vendors on projects, all while monitoring and enforcing safety and security policies. BGI teams place site security, physical security, and safety monitoring as a top priority and work toward seamless access to restricted area sites.



BGI security specialist can provide a complete scope of security programs as well as DOE “Q-cleared” security escorts.

Company Details

BGI ranks among the Top 500 Hispanic Businesses in the U.S. BGI is a small business entity (SBE) with certifications as a minority business entity (MBE) through the National Minority Supplier Development Council, a Small Business Administration-certified (SBA-certified) small disadvantaged business (SDB), as well as a service-disabled veteran-owned business (SDVOSB).

BGI is a partner in three Joint Ventures: BGI-GCON JV, LLC; BGI-BERS, LLC; and Bristol-BGI JV, LLC. The BGI-GCON joint venture focuses on construction services with projects in a variety of sectors across the southwestern U.S., while BGI-BERS and Bristol-BGI focus on environmental consulting and remediation opportunities.

BGI also owns BGI Australia Pty Ltd., Australia, an international subsidiary.

BGI is a bonded company with a single bond value of \$3.5 million and \$8 million aggregate. Additionally, BGI has demonstrated an exceptional safety record with a three-year average experience modification rating (EMR) of 0.79.3, **BGI is dedicated to a safety-first culture.**

- **UEI:** GJQFDZ6LD4P3
- **CAGE Code:** 4JTH3
- **DUNS Number:** 14767388

North American Industry Classification System (NAICS) Codes

- 213112** Support Activities for Oil and Gas Operations
- 236210** Industrial Building Construction
- 236220** Commercial / Institutional Building Construction
- 237120** Oil / Gas Pipeline / Related Structures Construction
- 237130** Power / Communication Line and Related Structures Construction
- 541330** Engineering Services
- 541611** Admin Management and General Management Consulting Services
- 541620** Environmental Consulting Services
- 541690** Other Scientific & Technical Consulting Services
- 541990** All Other Professional, Scientific, and Technical Services
- 561110** Office Administration Services
- 561210** Facilities Support Services
- 561612** Security Guards and Patrol Services
- 561621** Security Systems Services (Except Locksmith)
- 562910** Remediation Services - BGI PRIMARY NAICS

Joint Venture Partnerships



General Contracting & Institutional Building Construction MBE | SDBE | SDVOSB | UEI J6LXYXETNNZ8 | Cage 6W2K7

BGI-GCON JV, LLC (BGI-GCON) is a veteran-owned small business (VOSB) enterprise and a minority-owned small business founded in 2013 comprised of BGI and GCON, Inc. (GCON). Both companies are headquartered in the Phoenix metro area since 2003. Complimentary business offerings and a long association between owners led to the partnership, which provide construction and technical services to the federal government across the U.S..

BGI's was founded by a Certified Safety Professional (CSP) as an EH&S consulting service, our primary core competency. Today, along with our established reputation for safety programs, BGI offers exceptional services in construction project management and oversight, startup / commissioning programs, and construction QA. BGI provides construction management services to federal and commercial clients. From construction planning to start-up and commissioning support, construction managers oversee every aspect of renovation projects or new construction. BGI supports design, design-bid-build (DBB), and build projects as a prime contractor and as a member of a team. BGI provides integrated project management and controls, construction / field engineering services, QA, constructability reviews, design compliance, field construction oversight, subcontractor management, and claim negotiations.

GCON is a full-service construction management company serving high tech, data center, and mission critical markets across the country. GCON leads the industry in managing technical projects with expertly skilled team members. GCON offers the flexibility to manage the gamut of project types and sizes, ranging from ground-up construction to intricate interior renovations. GCON provides construction services through a variety of performance options including alternative project delivery methods. GCON believes successful projects are a byproduct of strong relationships, diligent planning, and highly competent people, which is evident in their open book estimates, on-time and on-budget projects, and delighted clients. The framework of any GCON project is a solid foundation of architectural and subcontractor relationships based on accountability, consistency, and integrity.

Technical Expertise

- Construction Project Management and Execution
- Construction Safety Management
- Government Program Management and Support

Relevant Experience

BGI-GCON leverages experienced and qualified personnel to support a wide range of small and large construction projects for government, commercial, and industrial clients. The partnership has an exemplary records of accomplishments and receives continued recognition from our clients as individual companies and as a joint venture team. Notable clients and projects are as follows:

- LANL, Triad National Security, LLC - General Construction MATOC | BGI-GCON JV
- DOE, NNSA | BGI
- Pantex Plant HEPF Fire Stopping | BGI-GCON JV
- MPR Associates, Inc. / USACE / DOE, NNSA / LANL - Engineering and Construction Management Services | BGI
- Confidential Semiconductor Manufacturer – EH&S Engineering Services | BGI
- General Electric Company (GE), Power & Water - Wind Turbine Construction and Commissioning | BGI
- Champion Development - Various Projects | GCON
- McDowell Enterprises LLC - Commercial Construction | GCON



**Texas Rangers Housing Facility Construction,
Surprise, AZ | GCON**



Engineering & Consulting Services

8(a) | ANC | UEI YGPZCCTKUGL7 | Cage 8HGQ8

BIDS – BGI JV, LLC is a union of Bristol Infrastructure Design Services, LLC (BIDS) and BGI. BIDS is a wholly owned subsidiary of Bristol Industries, LLC, is an Alaska Native Company (ANC) as well as a certified 8(a) business. BIDS provides a full range of services including civil, transportation, structural, environmental, arctic, and coastal engineering; inspection services; construction project management; and permitting and planning services. The company supports infrastructure projects from logistically challenging rural sanitation and roadway design projects for Alaska villages, cities, and boroughs, to comprehensive site design for military and private clientele nationwide.

This JV unites civil and structural engineering, construction, construction management, permitting, and planning expertise with construction management and EH&S specialties. BIDS and BGI are both proven federal government prime contractors. BIDS – BGI has the resources and experience to complete complex, multi-faceted projects, from concept to conclusion. The two companies embody quality and safety through flexibility and performance-driven professionals capable of successfully surpassing client expectations.

Technical Expertise

- Construction Project Management
- Civil & Structural Engineering
- Design Build
- Environmental Remediation
- Inspection Services
- Health & Safety
- Planning & Permitting
- Value Engineering

Relevant Experience

- NNSA / USACE / LANL – Engineering and Construction Oversight & Management Services | BGI
- USACE – Marine Forces Reserve Headquarters, New Orleans, LA | Bristol

Environmental Remediation Services

SBE | SDB | MBE | SDVOSB | UEI XSLMBBDEACF5 | Cage 90RE6

BGI – BERS JV, LLC is a joint venture consisting of Bristol Environmental Remediation Services, LLC (BERS) and BGI. BERS is a wholly owned subsidiary of Bristol Industries, LLC and is an ANC. BGI – BERS is a SBE, certified SDB, a MBE, as well as a SDVOSB.

BGI and BERS have joined forces to capitalize on BGI's DOE experience and BERS' USACE experience. BGI has performed work for the DOE and the NNSA, both as a prime contractor and as a subcontractor, while BERS has a long history working with USACE and has successfully executed over \$1.3 billion in contracts for several districts across the U.S. This JV combines industry-leading engineering supplying environmental remediation services nationwide with project performance in 47 states. The two firms are dedicated to superior quality while completing projects within time and budget constraints, while exercising flexibility to evolving client and project needs.

Technical Expertise

- Polyfluoroalkyl Substances (PFAS) Remedial Investigations
- Feasibility Studies for PFAS Removal
- Environmental Permitting, Compliance, and Regulatory Site Closure
- Munitions Clearance and Removal
- Explosives Site Plans and Explosive Safety
- Radiological Surveys
- Containment Area Design and Construction
- Above Ground and Underground Storage Tank (UST) removal

Relevant Experience

- USACE – Fort Huachuca Remedial Investigation and Feasibility Study, Sierra Vista, AZ | BERS
- USACE – Operations and Maintenance Including Dewater and Backfill of Former Spartan Tactical Launch Stations, Nekoma, ND | BERS
- USACE – University of Nevada Munitions Response Site Remedial Investigation and Feasibility Study, Las Vegas, NV | BERS
- USACE - PFOA and PFAS Sampling and Mitigation Joint Airbase Lewis-McChord, WA | BERS

BGI Project Locations



BGI's current and past project locations are highlighted by orange dots while blue stars indicate our offices.

Offices

ARIZONA
Corporate Headquarters
2222 S. Dobson Rd,
Bldg 5, Suite 503
Mesa, AZ 85202
Phone: 480.636.8734

NEW MEXICO
9664 Eagle Ranch Road, NW
Suite #5
Albuquerque, NM 87114
Phone: 505.910.4731

132 State Road 4
White Rock, NM 87547
Phone: 505.910.4731

TENNESSEE
Eastern Region
151 Lafayette Drive, Suite #202
Oak Ridge, TN 37830
Phone: 865.240.0621

Contacts



ZEFERINO BANDA, JR., CSP

President and Chief Executive Officer
480.636.8734, ext. 1
zef@bandagroupintl.com

BIO

VICKIE MARANVILLE, CHMM

Chief Operating Officer
480.636.8734, ext. 102
vickiem@bandagroupintl.com

BIO

ZEF BANDA, III

Vice President of Safeguards and Security
480.636.8734, ext. 108
zefb3@bandagroupintl.com

BIO

CHRIS EDGMON

Vice President of Commercial Operations
480.636.8734
chrise@bandagroupintl.com

BIO

JAMES LOCKHART, PE

Vice President of Government Operations
480.636.8734, ext. 111
jamesl@bandagroupintl.com

BIO

JOSEPH T. SENA

Executive Director of Government Operations
505.328.3708
joe.sena@bandagroupintl.com

BIO

GEORGE M. TAYLOR, MBA

Director of Business Development
865.244.2908, ext. 111
george.taylor@bandagroupintl.com

BIO

KAROL-LYNN REED

Director of Marketing and Communications
480.851.7058
karol-lynn.reed@bandagroupintl.com

BIO

LEE WOO YOUNG

Vice President of Business Development, Asia
+82 (0)10 6420 078
young@bandagroupintl.com

BIO

About BGI

BGI is headquartered in Mesa, AZ, with offices in Albuquerque, NM, White Rock, NM, and Oak Ridge, TN. Founded in 2003 on the principles of safety and health, BGI has developed into an international company engaging in projects across the United States and in diverse international locations such as Algeria, Australia, Chile, China, Ireland, Israel, Laos, Mexico, South Korea, Romania, and Venezuela. BGI has received numerous awards for environmental, health, and safety (EH&S) support from minority supplier entities, major private sector corporations, and government agencies.

Over the years, BGI has expanded its services to include environmental remediation and characterization, site security and security escort services, as well as construction oversight and management for a wide range of clients. Keeping workers safe, and ensuring overall project safety, is the core of our business. BGI staff members work closely with clients to establish strong working relationships and deliver project success while providing solutions to complex problems and ensuring client satisfaction.

BGI is a small business entity (SBE) with certifications as a minority business entity (MBE) through the National Minority Supplier Development Council, a Small Business Administration- (SBA-) certified small disadvantaged business (SDB), as well as a service-disabled veteran-owned business (SDVOSB).

